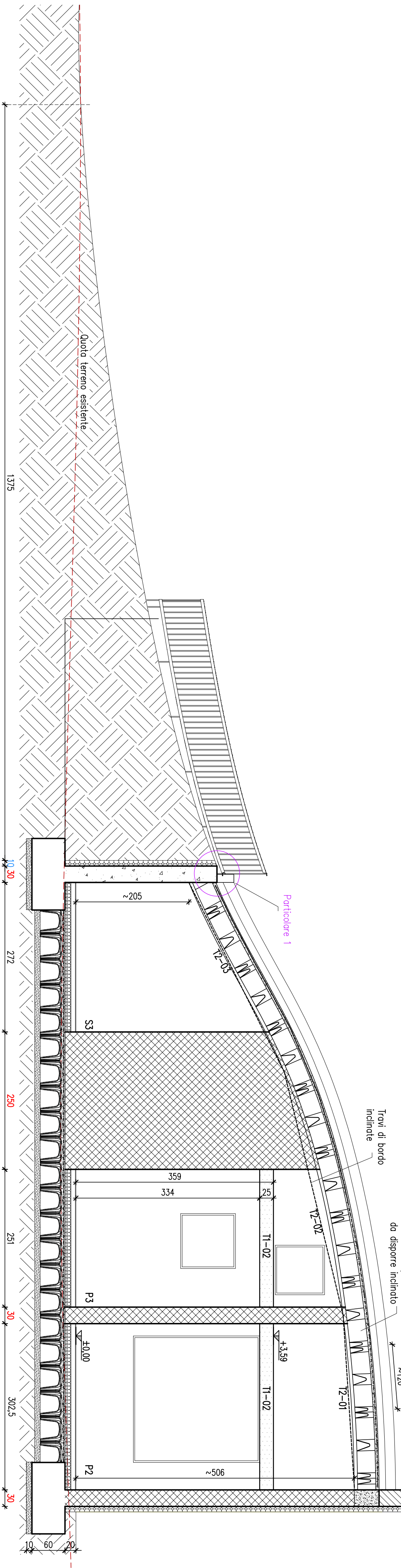
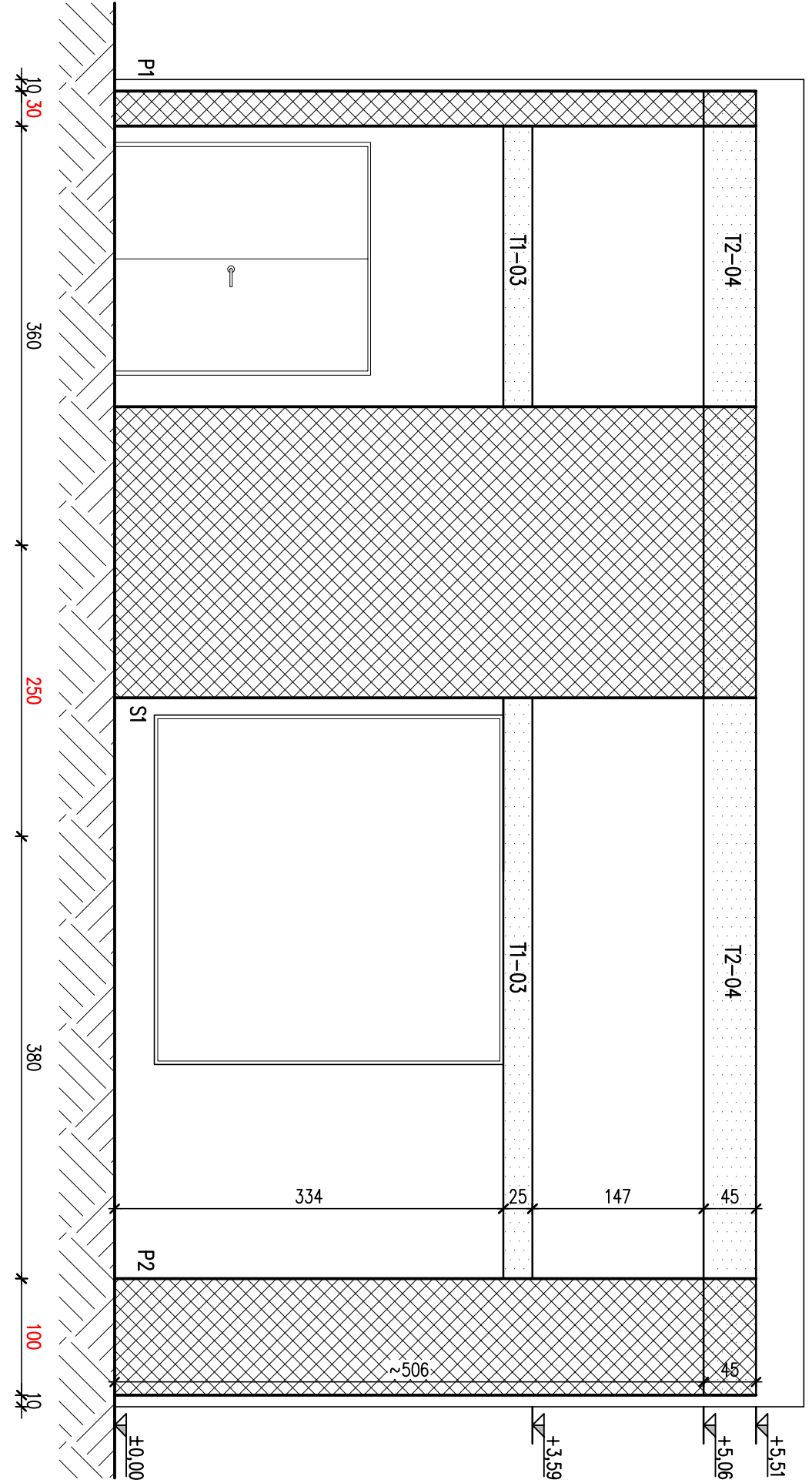


Sezione 1-1  
Scala 1:50

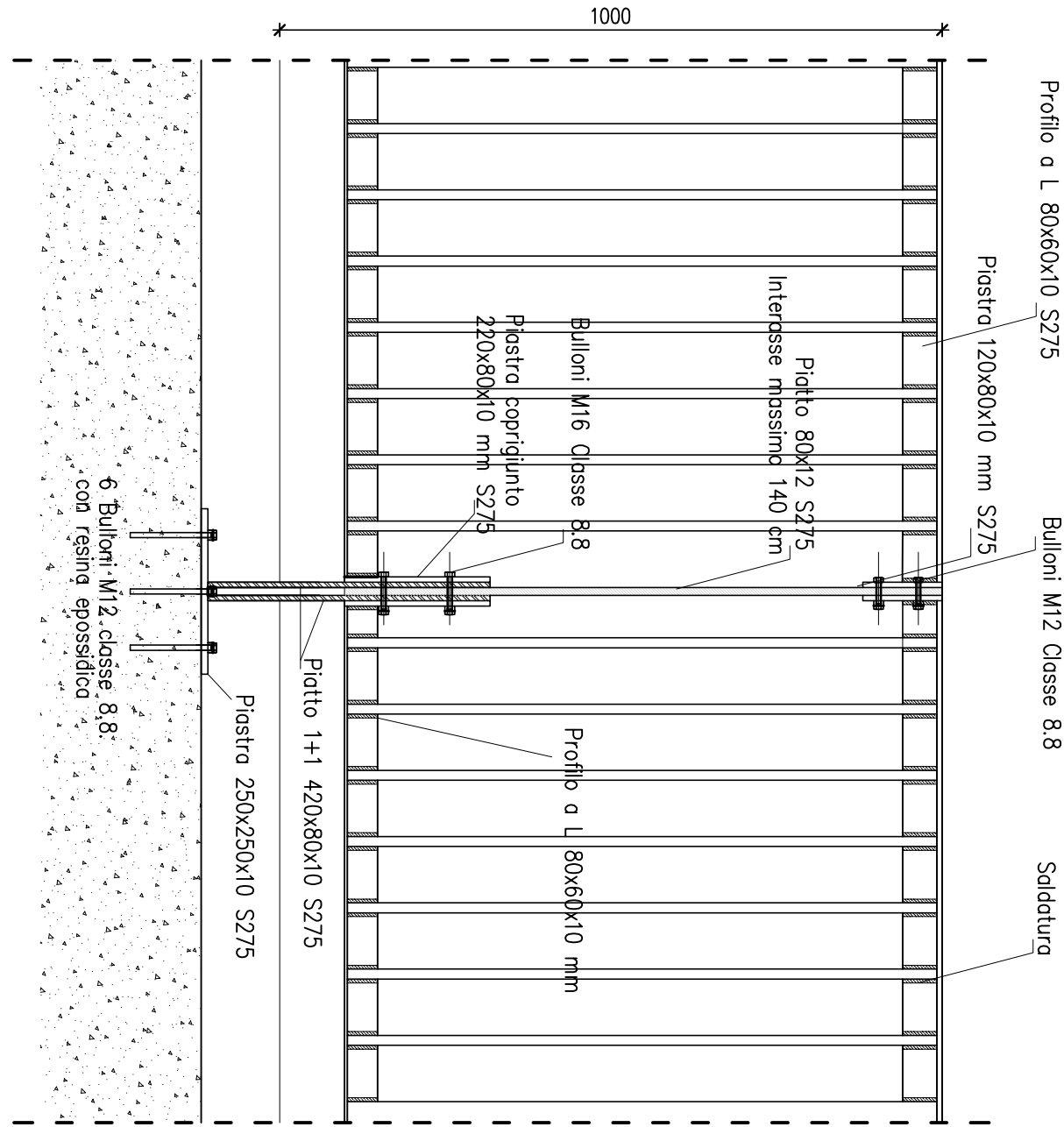


Sezione 2-2  
Scala 1:50

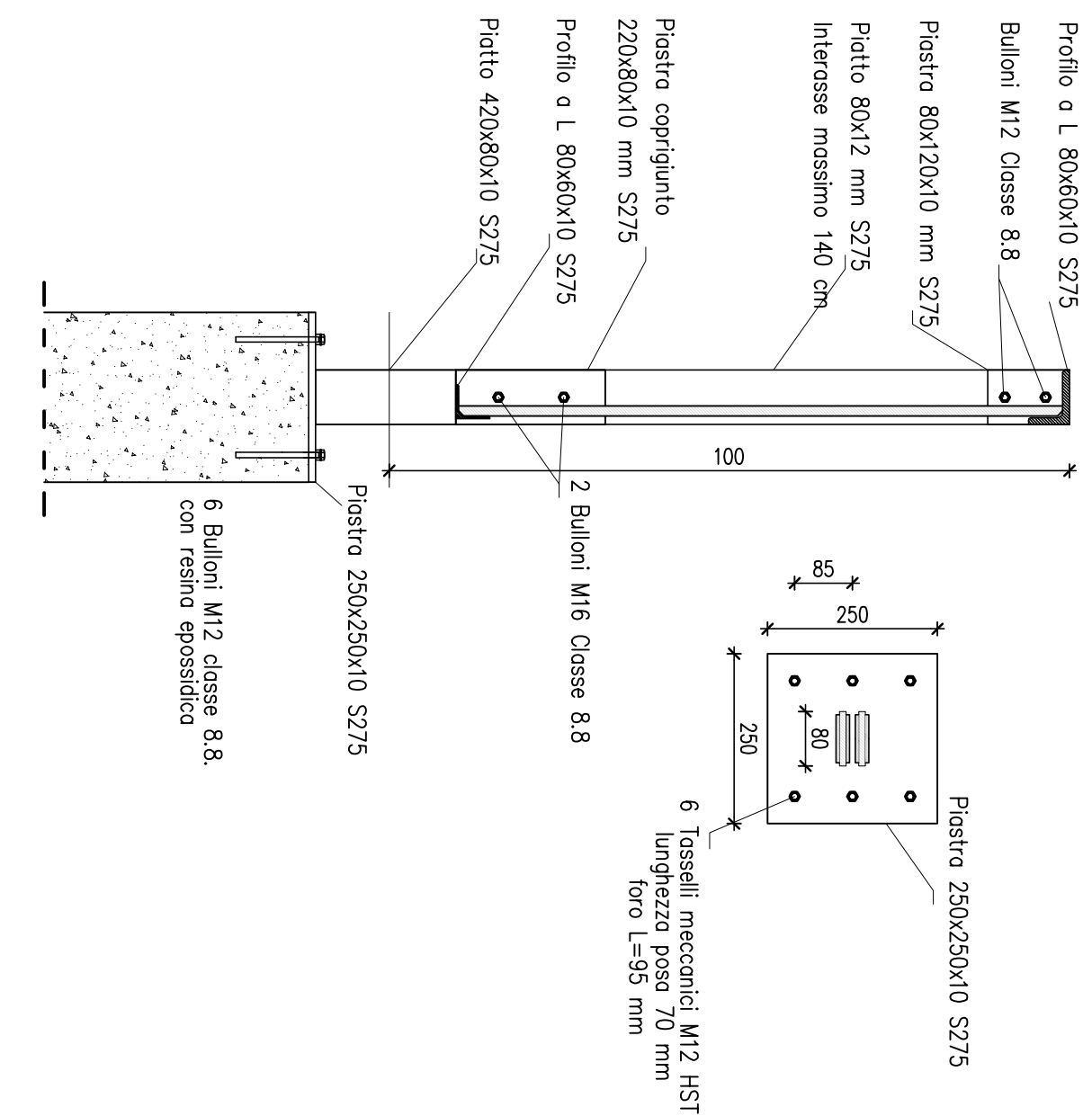


- LEGENDA
- PILASTRI/SETTI IN C.A.
  - MURI IN GAS-BETON
  - TRAVI E CORDOU
  - ISOLAMENTO
  - TERRENO

Particolare 1  
Scala 1:10

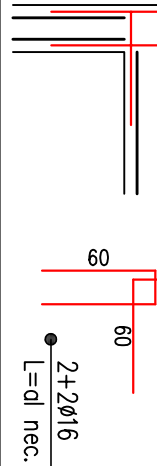


Sezione portapetto  
Scala 1:10



NOTE E PRESCRIZIONI D'OPERA

- Vibrare accuratamente i getti;
- E' vietato qualsiasi oggetto d'acqua in cantiere
- Per le barre di armatura (ove non specificato)
  - Sovrapposizione minimo 80Ø
  - Ancoraggio minimo 40Ø
- Manifreni per prove di piegamento a 90° e successivo raddrizzamento senza cricche:
  - Ø < 12mm
  - 12mm < Ø < 16 mm > 4Ø
  - 16mm < Ø < 20 mm > 5Ø
  - 20mm < Ø < 40 mm > 5Ø
  - 25mm < Ø < 40 mm > 10Ø
- Le reti elettrosaldate delle solette devono sovrapporsi per almeno due maglie
- Le guide idrostatiche dovranno sempre essere verificate in fase di esecuzione dei lavori contestualmente alla Direzione Lavori architettonica e strutturale.  
**La quota +0,00 e stata presa in corrispondenza del finito del piano terra.**
- Eseguire lo scavo fino ad individuare terreno con capacità portanti conformi a quanto indicato da relazione geologica
- Per la dimensione effettiva delle aperture, si vedono le tavole architettoniche
- In corrispondenza degli angoli dei cordoli posizionare barre di armatura come in figura



SPECIFICHE UNI EN 1090

- Nome di riferimento:
  - Progetto:
  - Costruzione: EN 1090-1, EN 1090-2
  - Doti caratteristiche dell'opera:
  - Classe di esecuzione:
- Nome Tentative per le Costruzioni (D.M. 14-01-2006)
  - EN1090-1
  - EN1090-2
  - EN1090-3
  - EN1090-4
  - EN1090-5
  - EN1090-6
  - EN1090-7
  - EN1090-8
  - EN1090-9
  - EN1090-10
  - EN1090-11
  - EN1090-12
  - EN1090-13
  - EN1090-14
  - EN1090-15
  - EN1090-16
  - EN1090-17
  - EN1090-18
  - EN1090-19
  - EN1090-20
  - EN1090-21
  - EN1090-22
  - EN1090-23
  - EN1090-24
  - EN1090-25
  - EN1090-26
  - EN1090-27
  - EN1090-28
  - EN1090-29
  - EN1090-30
  - EN1090-31
  - EN1090-32
  - EN1090-33
  - EN1090-34
  - EN1090-35
  - EN1090-36
  - EN1090-37
  - EN1090-38
  - EN1090-39
  - EN1090-40
  - EN1090-41
  - EN1090-42
  - EN1090-43
  - EN1090-44
  - EN1090-45
  - EN1090-46
  - EN1090-47
  - EN1090-48
  - EN1090-49
  - EN1090-50
  - EN1090-51
  - EN1090-52
  - EN1090-53
  - EN1090-54
  - EN1090-55
  - EN1090-56
  - EN1090-57
  - EN1090-58
  - EN1090-59
  - EN1090-60
  - EN1090-61
  - EN1090-62
  - EN1090-63
  - EN1090-64
  - EN1090-65
  - EN1090-66
  - EN1090-67
  - EN1090-68
  - EN1090-69
  - EN1090-70
  - EN1090-71
  - EN1090-72
  - EN1090-73
  - EN1090-74
  - EN1090-75
  - EN1090-76
  - EN1090-77
  - EN1090-78
  - EN1090-79
  - EN1090-80
  - EN1090-81
  - EN1090-82
  - EN1090-83
  - EN1090-84
  - EN1090-85
  - EN1090-86
  - EN1090-87
  - EN1090-88
  - EN1090-89
  - EN1090-90
  - EN1090-91
  - EN1090-92
  - EN1090-93
  - EN1090-94
  - EN1090-95
  - EN1090-96
  - EN1090-97
  - EN1090-98
  - EN1090-99
  - EN1090-100
  - EN1090-101
  - EN1090-102
  - EN1090-103
  - EN1090-104
  - EN1090-105
  - EN1090-106
  - EN1090-107
  - EN1090-108
  - EN1090-109
  - EN1090-110
  - EN1090-111
  - EN1090-112
  - EN1090-113
  - EN1090-114
  - EN1090-115
  - EN1090-116
  - EN1090-117
  - EN1090-118
  - EN1090-119
  - EN1090-120
  - EN1090-121
  - EN1090-122
  - EN1090-123
  - EN1090-124
  - EN1090-125
  - EN1090-126
  - EN1090-127
  - EN1090-128
  - EN1090-129
  - EN1090-130
  - EN1090-131
  - EN1090-132
  - EN1090-133
  - EN1090-134
  - EN1090-135
  - EN1090-136
  - EN1090-137
  - EN1090-138
  - EN1090-139
  - EN1090-140
  - EN1090-141
  - EN1090-142
  - EN1090-143
  - EN1090-144
  - EN1090-145
  - EN1090-146
  - EN1090-147
  - EN1090-148
  - EN1090-149
  - EN1090-150
  - EN1090-151
  - EN1090-152
  - EN1090-153
  - EN1090-154
  - EN1090-155
  - EN1090-156
  - EN1090-157
  - EN1090-158
  - EN1090-159
  - EN1090-160
  - EN1090-161
  - EN1090-162
  - EN1090-163
  - EN1090-164
  - EN1090-165
  - EN1090-166
  - EN1090-167
  - EN1090-168
  - EN1090-169
  - EN1090-170
  - EN1090-171
  - EN1090-172
  - EN1090-173
  - EN1090-174
  - EN1090-175
  - EN1090-176
  - EN1090-177
  - EN1090-178
  - EN1090-179
  - EN1090-180
  - EN1090-181
  - EN1090-182
  - EN1090-183
  - EN1090-184
  - EN1090-185
  - EN1090-186
  - EN1090-187
  - EN1090-188
  - EN1090-189
  - EN1090-190
  - EN1090-191
  - EN1090-192
  - EN1090-193
  - EN1090-194
  - EN1090-195
  - EN1090-196
  - EN1090-197
  - EN1090-198
  - EN1090-199
  - EN1090-200
  - EN1090-201
  - EN1090-202
  - EN1090-203
  - EN1090-204
  - EN1090-205
  - EN1090-206
  - EN1090-207
  - EN1090-208
  - EN1090-209
  - EN1090-210
  - EN1090-211
  - EN1090-212
  - EN1090-213
  - EN1090-214
  - EN1090-215
  - EN1090-216
  - EN1090-217
  - EN1090-218
  - EN1090-219
  - EN1090-220
  - EN1090-221
  - EN1090-222
  - EN1090-223
  - EN1090-224
  - EN1090-225
  - EN1090-226
  - EN1090-227
  - EN1090-228
  - EN1090-229
  - EN1090-230
  - EN1090-231
  - EN1090-232
  - EN1090-233
  - EN1090-234
  - EN1090-235
  - EN1090-236
  - EN1090-237
  - EN1090-238
  - EN1090-239
  - EN1090-240
  - EN1090-241
  - EN1090-242
  - EN1090-243
  - EN1090-244
  - EN1090-245
  - EN1090-246
  - EN1090-247
  - EN1090-248
  - EN1090-249
  - EN1090-250
  - EN1090-251
  - EN1090-252
  - EN1090-253
  - EN1090-254
  - EN1090-255
  - EN1090-256
  - EN1090-257
  - EN1090-258
  - EN1090-259
  - EN1090-260
  - EN1090-261
  - EN1090-262
  - EN1090-263
  - EN1090-264
  - EN1090-265
  - EN1090-266
  - EN1090-267
  - EN1090-268
  - EN1090-269
  - EN1090-270
  - EN1090-271
  - EN1090-272
  - EN1090-273
  - EN1090-274
  - EN1090-275
  - EN1090-276
  - EN1090-277
  - EN1090-278
  - EN1090-279
  - EN1090-280
  - EN1090-281
  - EN1090-282
  - EN1090-283
  - EN1090-284
  - EN1090-285
  - EN1090-286
  - EN1090-287
  - EN1090-288
  - EN1090-289
  - EN1090-290
  - EN1090-291
  - EN1090-292
  - EN1090-293
  - EN1090-294
  - EN1090-295
  - EN1090-296
  - EN1090-297
  - EN1090-298
  - EN1090-299
  - EN1090-300
  - EN1090-301
  - EN1090-302
  - EN1090-303
  - EN1090-304
  - EN1090-305
  - EN1090-306
  - EN1090-307
  - EN1090-308
  - EN1090-309
  - EN1090-310
  - EN1090-311
  - EN1090-312
  - EN1090-313
  - EN1090-314
  - EN1090-315
  - EN1090-316
  - EN1090-317
  - EN1090-318
  - EN1090-319
  - EN1090-320
  - EN1090-321
  - EN1090-322
  - EN1090-323
  - EN1090-324
  - EN1090-325
  - EN1090-326
  - EN1090-327
  - EN1090-328
  - EN1090-329
  - EN1090-330
  - EN1090-331
  - EN1090-332
  - EN1090-333
  - EN1090-334
  - EN1090-335
  - EN1090-336
  - EN1090-337
  - EN1090-338
  - EN1090-339
  - EN1090-340
  - EN1090-341
  - EN1090-342
  - EN1090-343
  - EN1090-344
  - EN1090-345
  - EN1090-346
  - EN1090-347
  - EN1090-348
  - EN1090-349
  - EN1090-350
  - EN1090-351
  - EN1090-352
  - EN1090-353
  - EN1090-354
  - EN1090-355
  - EN1090-356
  - EN1090-357
  - EN1090-358
  - EN1090-359
  - EN1090-360
  - EN1090-361
  - EN1090-362
  - EN1090-363
  - EN1090-364
  - EN1090-365
  - EN1090-366
  - EN1090-367
  - EN1090-368
  - EN1090-369
  - EN1090-370
  - EN1090-371
  - EN1090-372
  - EN1090-373
  - EN1090-374
  - EN1090-375
  - EN1090-376
  - EN1090-377
  - EN1090-378
  - EN1090-379
  - EN1090-380
  - EN1090-381
  - EN1090-382
  - EN1090-383
  - EN1090-384
  - EN1090-385
  - EN1090-386
  - EN1090-387
  - EN1090-388
  - EN1090-389
  - EN1090-390
  - EN1090-391
  - EN1090-392
  - EN1090-393
  - EN1090-394
  - EN1090-395
  - EN1090-396
  - EN1090-397
  - EN1090-398
  - EN1090-399
  - EN1090-400
  - EN1090-401
  - EN1090-402
  - EN1090-403
  - EN1090-404
  - EN1090-405
  - EN1090-406
  - EN1090-407
  - EN1090-408
  - EN1090-409
  - EN1090-410
  - EN1090-411
  - EN1090-412
  - EN1090-413
  - EN1090-414
  - EN1090-415
  - EN1090-416
  - EN1090-417
  - EN1090-418
  - EN1090-419
  - EN1090-420
  - EN1090-421
  - EN1090-422
  - EN1090-423
  - EN1090-424
  - EN1090-425
  - EN1090-426
  - EN1090-427
  - EN1090-428
  - EN1090-429
  - EN1090-430
  - EN1090-431
  - EN1090-432
  - EN1090-433
  - EN1090-434
  - EN1090-435
  - EN1090-436
  - EN1090-437
  - EN1090-438
  - EN1090-439
  - EN1090-440
  - EN1090-441
  - EN1090-442
  - EN1090-443
  - EN1090-444
  - EN1090-445
  - EN1090-446
  - EN1090-447
  - EN1090-448
  - EN1090-449
  - EN1090-450
  - EN1090-451
  - EN1090-452
  - EN1090-453
  - EN1090-454
  - EN1090-455
  - EN1090-456
  - EN1090-457
  - EN1090-458
  - EN1090-459
  - EN1090-460
  - EN1090-461
  - EN1090-462
  - EN1090-463
  - EN1090-464
  - EN1090-465
  - EN1090-466
  - EN1090-467
  - EN1090-468
  - EN1090-469
  - EN1090-470
  - EN1090-471
  - EN1090-472
  - EN1090-473
  - EN1090-474
  - EN1090-475
  - EN1090-476
  - EN1090-477
  - EN1090-478
  - EN1090-479
  - EN1090-480
  - EN1090-481
  - EN1090-482
  - EN1090-483
  - EN1090-484
  - EN1090-485
  - EN1090-486
  - EN1090-487
  - EN1090-488
  - EN1090-489
  - EN1090-490
  - EN1090-491
  - EN1090-492
  - EN1090-493
  - EN1090-494
  - EN1090-495
  - EN1090-496
  - EN1090-497
  - EN1090-498
  - EN1090-499
  - EN1090-500
  - EN1090-501
  - EN1090-502
  - EN1090-503
  - EN1090-504
  - EN1090-505
  - EN1090-506
  - EN1090-507
  - EN1090-508
  - EN1090-509
  - EN1090-510
  - EN1090-511
  - EN1090-512
  - EN1090-513
  - EN1090-514
  - EN1090-515
  - EN1090-516
  - EN1090-517
  - EN1090-518
  - EN1090-519
  - EN1090-520
  - EN1090-521
  - EN1090-522
  - EN1090-523
  - EN1090-524
  - EN1090-525
  - EN1090-526
  - EN1090-527
  - EN1090-528
  - EN1090-529
  - EN1090-530
  - EN1090-531
  - EN1090-532
  - EN1090-533
  - EN1090-534
  - EN1090-535
  - EN1090-536
  - EN1090-537
  - EN1090-538
  - EN1090-539
  - EN1090-540
  - EN1090-541
  - EN1090-542
  - EN1090-543
  - EN1090-544
  - EN1090-545
  - EN1090-546
  - EN1090-547
  - EN1090-548
  - EN1090-549
  - EN1090-550
  - EN1090-551
  - EN1090-552
  - EN1090-553
  - EN1090-554
  - EN1090-555
  - EN1090-556
  - EN1090-557
  - EN1090-558
  - EN1090-559
  - EN1090-560
  - EN1090-561
  - EN1090-562
  - EN1090-563
  - EN1090-564
  - EN1090-565
  - EN1090-566
  - EN1090-567
  - EN1090-568
  - EN1090-569
  - EN1090-570
  - EN1090-571
  - EN1090-572
  - EN1090-573
  - EN1090-574
  - EN1090-575
  - EN1090-576
  - EN1090-577
  - EN1090-578
  - EN1090-579
  - EN1090-580
  - EN1090-581
  - EN1090-582
  - EN1090-583
  - EN1090-584
  - EN1090-585
  - EN1090-586
  - EN1090-587
  - EN1090-588
  - EN1090-589
  - EN1090-590
  - EN1090-591
  - EN1090-592
  - EN1090-593
  - EN1090-594
  - EN1090-595
  - EN1090-596
  - EN1090-597
  - EN1090-598
  - EN1090-599
  - EN1090-600
  - EN1090-601
  - EN1090-602
  - EN1090-603
  - EN1090-604
  - EN1090-605
  - EN1090-606
  - EN1090-607
  - EN1090-608
  - EN1090-609
  - EN1090-610
  - EN1090-611
  - EN1090-612
  - EN1090-613
  - EN1090-614
  - EN1090-615
  - EN1090-616
  - EN1090-617
  - EN1090-618
  - EN1090-619
  - EN1090-620
  - EN1090-621
  - EN1090-622
  - EN1090-623
  - EN1090-624
  - EN1090-625
  - EN1090-626
  - EN1090-627
  - EN1090-628
  - EN1090-629
  - EN1090-630
  - EN1090-631
  - EN1090-632
  - EN1090-633
  - EN1090-634
  - EN1090-635
  - EN1090-636
  - EN1090-637
  - EN1090-638
  - EN1090-639
  - EN1090-640
  - EN1090-641
  - EN1090-642
  - EN1090-643
  - EN1090-644
  - EN1090-645
  - EN1090-646
  - EN1090-647
  - EN1090-648
  - EN1090-649
  - EN1090-650
  - EN1090-651
  - EN1090-652
  - EN1090-653
  - EN1090-654
  - EN1090-655
  - EN1090-656
  - EN1090-657
  - EN1090-658
  - EN1090-659
  - EN1090-660
  - EN1090-661
  - EN1090-662
  - EN1090-663
  - EN1090-664
  - EN1090-665
  - EN1090-666
  - EN1090-667
  - EN1090-668
  - EN1090-669
  - EN1090-670
  - EN1090-671
  - EN1090-672
  - EN1090-673
  - EN1090-674
  - EN1090-675
  - EN1090-676
  - EN1090-677
  - EN1090-678
  - EN1090-679
  - EN1090-680
  - EN1090-681
  - EN1090-682
  - EN1090-683
  - EN1090-684
  - EN1090-685
  - EN1090-686
  - EN1090-687
  - EN1090-688
  - EN1090-689
  - EN1090-690
  - EN1090-691
  - EN1090-692
  - EN1090-693
  - EN1090-694
  - EN1090-695
  - EN1090-696
  - EN1090-697
  - EN1090-698
  - EN1090-699
  - EN1090-700
  - EN1090-701
  - EN1090-702
  - EN1090-703
  - EN1090-704
  - EN1090-705
  - EN1090-706
  - EN1090-707
  - EN1090-708
  - EN1090-709
  - EN1090-710
  - EN1090-711
  - EN1090-712
  - EN1090-713
  - EN1090-714
  - EN1090-715
  - EN1090-716
  - EN1090-717
  - EN1090-718
  - EN1090-719
  - EN1090-720
  - EN1090-721
  - EN1090-722
  - EN1090-723
  - EN1090-724
  - EN1090-725
  - EN1090-726
  - EN1090-727
  - EN1090-728
  - EN1090-729
  - EN1090-730
  - EN1090-731
  - EN1090-732
  - EN1090-733
  - EN1090-734
  - EN1090-735
  - EN1090-736
  - EN1090-737
  - EN1090-738
  - EN1090-739
  - EN1090-740
  - EN1090-741
  - EN1090-742
  - EN1090-743
  - EN1090-744
  - EN1090-745
  - EN1090-746
  - EN1090-747
  - EN1090-748
  - EN1090-749
  - EN1090-750
  - EN1090-751
  - EN1090-752
  - EN1090-753
  - EN1090-754
  - EN1090-755
  - EN1090-756
  - EN1090-757
  - EN1090-758
  - EN1090-759
  - EN1090-760
  - EN1090-761
  - EN1090-762
  - EN1090-763
  - EN1090-764
  - EN1090-765
  - EN1090-766
  - EN1090-767
  - EN1090-768
  - EN1090-769
  - EN1090-770
  - EN1090-771
  - EN1090-772
  - EN1090-773
  - EN1090-774
  - EN1090-775
  - EN1090-776
  - EN1090-777
  - EN1090-778
  - EN1090-779
  - EN1090-780
  - EN1090-781
  - EN1090-782
  - EN1090-783
  - EN1090-784
  - EN1090-785
  - EN1090-786
  - EN1090-787
  - EN1090-788
  - EN1090-789
  - EN1090-790
  - EN1090-791
  - EN1090-792
  - EN1090-793
  - EN1090-794
  - EN1090-795
  - EN1090-796
  - EN1090-797
  - EN1090-798
  - EN1090-799
  - EN1090-80